

VALVES FOR GAS APPLIANCES WITH FIREBAG® THERMAL SAFETY DEVICE AND TECOBLOCK HANDLE

G2



APPLICATIONS

- For all types of gas as specified in EN 437 and DVGW G260 (Methane, Butane, Propane and **Hydrogen**).



TECHNICAL DATA

Temperature	-20 °C ÷ +60 °C
Working pressure	MOP 5 (5 bar)
Connections	EN 10226-1 Rp thread G ISO 228-1
High temperature resistance	HTB 5 bar 650 °C for 30' (C5)
Activation temperature FIREBAG	100°C -5K
Reference standards	DIN EN 331 DIN 3586 EU 2016 / 426 regulation DVGW ZP 4110

FEATURES

- Ball valves for gas appliances with FIREBAG® thermal safety device.
- Suitable and certified in accordance with EN 437 and DVGW G260 for gas systems up to 100% hydrogen.
- G2 DIN EN 331 certified ball valves are equipped with the FIREBAG® thermal safety device to block gas flow in the event of fire.
- They have Tecoblock handles to protect against accidental opening.
- The range includes both the straight and elbow version, in DN15-20-25 sizes.
- They are designed and built to guarantee maximum safety in gas systems.
- Finish: chrome-sandblasted.

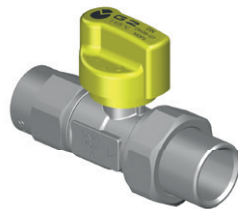
**TECOBLOCK HANDLE**

The Tecoblock system is designed to lock the valve in the closed position so that it cannot be opened accidentally, but only after pressing the handle.

**FIREBAG® - TAE** (see page 150)

The valves have a FIREBAG® thermal safety device built into the steel inlet fitting. This solution makes it possible to leave the valve dimensions unchanged. FIREBAG® complies with the requirements of the DIN 3586 standard and activates at a temperature of 100°C-5K and withstands up to 650°C for 30 minutes at a pressure of 5 bar.

G2 straight valve with FIREBAG®, threaded/threaded fitting version for gas appliances



Code	DN	FIREBAG TAE	Finish	Connections		Pack
				D1	D2 Fitting DIN 3436	
G2T106C00 *	DN15	•	Chromium	Rp 1/2"	Rp 1/2"	15
G2T107C00 *	DN20	•	Chromium	Rp 3/4"	Rp 3/4"	10
G2T110C00	DN25	•	Chromium	Rp 1"	Rp 1"	5

**i** \* Non-chrome versions available on request.

G2 90° valve with FIREBAG®, threaded/threaded fitting version for gas appliances



Code	DN	FIREBAG TAE	Finish	Connections		Pack
				D1	D2 Fitting DIN 3436	
G2T406C00	DN15	•	Chromium	R 1/2"	Rp 1/2"	15
G2T407C00	DN20	•	Chromium	R 3/4"	Rp 3/4"	10
G2T410C00	DN25	•	Chromium	R 1"	Rp 1"	5

G2 straight valve with FIREBAG®, threaded version for gas appliances and hoses



Code	DN	FIREBAG TAE	Finish	Connections		Pack
				D1	D2	
G2T100C00	DN15	•	Chromium	Rp 1/2"	G 1/2"	20

G2 90° valve with FIREBAG®, threaded version for gas appliances and hoses



Code	DN	FIREBAG TAE	Finish	Connections		Pack
				D1	D2	
G2T400C00	DN15	•	Chromium	R 1/2"	G 1/2"	20