



G4 VALVES FOR GAS SYSTEMS
WITH FIREBAG® THERMAL SAFETY DEVICE



PAGE 138

SHUT-OFF
VALVE
WITH THERMAL
SAFETY DEVICE
FOR GAS SYSTEMS

G4



APPLICATIONS

- For all types of gas as specified in EN 437 and DVGW G260 (Methane, Butane, Propane and **Hydrogen**).



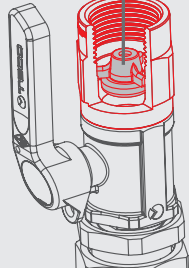
TECHNICAL DATA

Temperature	-20 °C ÷ +60 °C
Working pressure	MOP 5 (5 bar)
Connections	EN 10226-1 Rp thread
High temperature resistance	HTB 5 bar 650 °C for 30' (C5)
Activation temperature FIREBAG	100°C -5K
Reference standards	DIN EN 331 DIN 3586 EU 2016 / 426 regulation DVGW ZP 4110

FEATURES

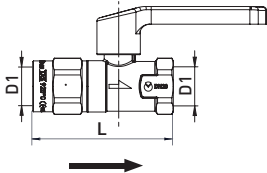
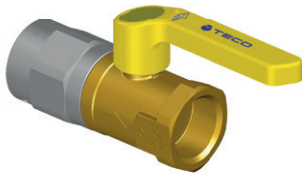
- Gas shut-off valve with FIREBAG® thermal safety device.
- Suitable and certified in accordance with EN 437 and DVGW G260 for gas systems up to 100% hydrogen.
- G4 DIN EN 331 certified ball valves are equipped with the FIREBAG® thermal safety device to block gas flow in the event of fire.
- Available with threaded connections (EN 10226-1) from 1/2" to 2".
- The valve must be installed upstream of open-flame gas appliances or in areas with a high risk of fire.

FIREBAG® - TAE (see page 150)



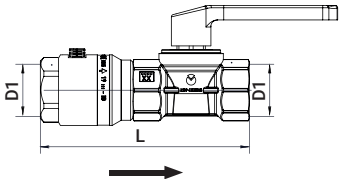
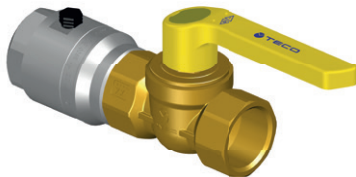
The valve has a thermal FIREBAG® safety device built into the steel inlet fitting. FIREBAG® complies with the requirements of the DIN 3586 standard and activates at a temperature of 100°C-5K and withstands up to 650°C for 30 minutes at a pressure of 5 bar.

G4 valve, straight version, threaded F/F (DN15 - DN20 - DN25) with FIREBAG®



Code	DN	FIREBAG TAE	Connections	L	Pack
			D1		
G221010100	DN15	•	Rp 1/2"	75	15
G222010100	DN20	•	Rp 3/4"	88	10
G223010100	DN25	•	Rp 1"	105	5

G4 valve, straight version, threaded F/F (DN32 - DN40 - DN50) with FIREBAG®



Code	DN	FIREBAG TAE	Connections	L	Pack
			D1		
G424010100	DN32	•	Rp 1 1/4"	177	5
G425010100	DN40	•	Rp 1 1/2"	185	5
G426010100	DN50	•	Rp 2"	218	5